



MODEL PAPER

Student Name : _____

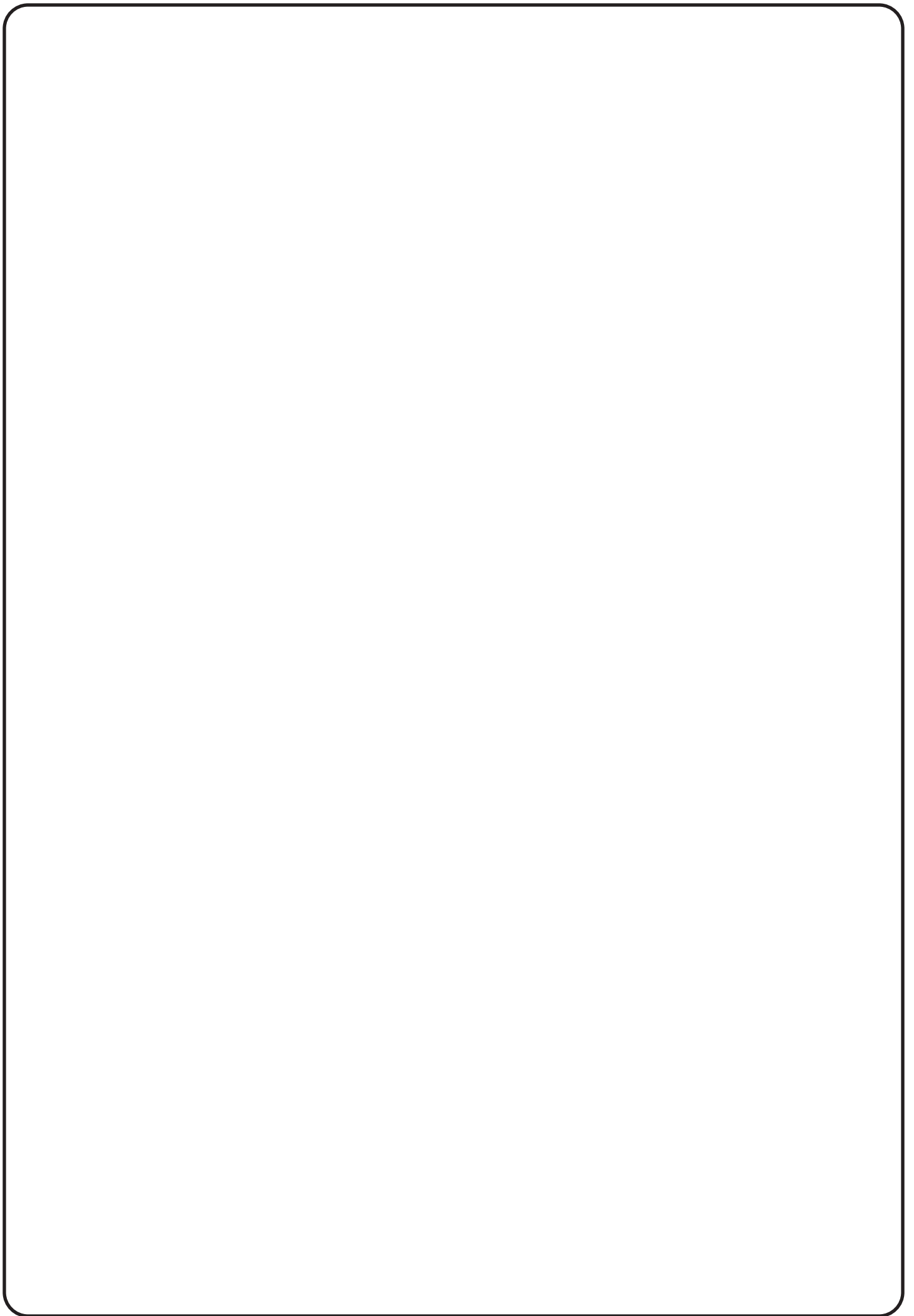
School Name : _____

Seat No. _____ Grade **2** Section _____

Important Instructions

- 1) Check your name and grade on OMR answersheet. Student signature is must on answersheet.
- 2) There are three sections A, B & C. Section A has 10 questions of 1 mark each. Section B has 30 questions of 2 marks each. Section C has 10 questions of 3 marks each
- 3) Time allowed is 1 hour. After that extra 5 minutes will be given to darken the circles with Blue / Black ball point pen.
- 4) **Write answers on OMR Answer sheet by filling the correct circles. Do not write answers on question paper.**
- 5) Use pencil or blue / black ball point pen to fill the circles.
- 6) Students resorting to unfair means like copying / cheating in any form during the examination will be disqualified.
- 7) Use of calculator is prohibited.
- 8) Students must carry the admit card & their school identity card with them.

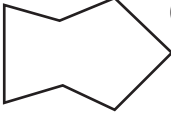
Total Marks: / 100



Section - A (1 mark each)

- 1) $5 + 6 = ?$
 a) 8 b) 9 c) 10 d) 11
- 2) **Select the number less than 345.**
 a) 342 b) 352 c) 354 d) 359
- 3) $862 \square 626$ **Compare & put appropriate sign (<, >, =)**
 a) < b) > c) = d) None of these
- 4) **Write the missing ordinal number.**
 $18^{\text{th}} \rightarrow 19^{\text{th}} \rightarrow \square \rightarrow 21^{\text{st}} \rightarrow 22^{\text{nd}} \rightarrow 23^{\text{rd}}$
 a) 2^{nd} b) 10^{th} c) 20^{th} d) 1^{st}
- 5)

$\begin{array}{r} 5 \\ x 7 \\ \hline \end{array}$

 a) 35 b) 45 c) 40 d) 12
- 6) **Select the number greater than 145.**
 a) 139 b) 98 c) 109 d) 154
- 7) **18 less than 30 = ?**
 a) 12 b) 28 c) 48 d) 22
- 8) **Thirty three = ?**
 a) 13 b) 303 c) 33 d) 30
- 9)  **Count the number of sides in the given figure**
 a) 12 b) 8 c) 9 d) 7
- 10) **There are \square months in a year.**
 a) 7 b) 12 c) 24 d) 60

Section - B

(2 marks each)

- 11) Arrange the given numbers in ascending order. 136, 289, 67, 354
 a) 354, 289, 136, 67 b) 67, 136, 289, 354
 c) 354, 67, 136, 289 d) 67, 136, 354, 289
- 12) Quarter past 5 is same as _____.
 a) 4:45 b) 5:45 c) 5:15 d) 4:30
- 13) Which of the following numbers has 8 in its tens place?
 a) 568 b) 658 c) 865 d) 685
- 14) Find the multiple of 4 from the following.
 a) 30 b) 36 c) 41 d) 26
- 15) Form the smallest 3-digit number using each digit only once 1, 7, 2
 a) 721 b) 172 c) 127 d) 712
- 16) Compare and put appropriate sign.
 Two hundred fifty Two hundred fifty
 a) = b) < c) > d) None of these
- 17) Read the place value in words and identify the number.
 Five hundreds - Eight tens - Six ones
 a) 586 b) 558 c) 580 d) 685
- 18) Arrange the given numbers in descending order: 34, 17, 52, 9
 a) 9, 17, 34, 52 b) 9, 52, 34, 17
 c) 52, 17, 9, 34 d) 52, 34, 17, 9
- 19) Expanded form of 217 = ?
 a) 2 + 1 + 7 b) 200 + 70 + 1 c) 200 + 10 + 7 d) 20 + 10 + 7

- 20)  Find the value of 'y'.

- a) 120 b) 20 c) 30 d) 40

21) Double of 15 = ?

- a) 20 b) 25 c) 30 d) 35

22)

+	3
+	8
+	2
+	5

- a) 16 b) 15 c) 17 d) 18

23) Form the largest 3-digit number using each of the digit only once.

4, 3, 9

- a) 493 b) 943 c) 934 d) 349

24) Choose the correct statement.

- a) $67 > 64$ b) $22 = 26$ c) $39 < 36$ d) $87 < 82$

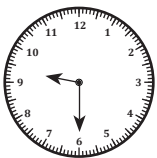
25) If $a + a + a = 12$, find the value of 'a'.

- a) 6 b) 3 c) 4 d) 8

26) Which of the following number has all even digits?

- a) 254 b) 478 c) 968 d) 462

27)



What time is shown in the clock?

- a) 9:30 b) 9:45 c) 6:30 d) 6:45

28) Which of the following number has all odd digits?

- a) 136 b) 691 c) 549 d) 379

29) 3 tens + ones = 50

- a) 2 b) 20 c) 80 d) 0

- 30) $\square \times \square = 9$
a) 2 b) 3 c) 1 d) 4
- 31) **Smallest two digit odd number + 5 = ?**
a) 16 b) 106 c) 105 d) 15
- 32) **1 hundred + 2 tens + 9 ones = ?**
a) 120 b) 1209 c) 10029 d) 129
- 33) **What comes just after 5 tens?**
a) 51 b) 49 c) 50 d) 6
- 34) **If today is Monday, then day before yesterday was _____.**
a) Tuesday b) Wednesday c) Saturday d) Sunday
- 35) **Add 18 to the number formed by 8 tens and 7 ones.**
a) 79 b) 105 c) 71 d) 93
- 36) **9 \square 3 = 12 Put proper sign to make expression correct.**
a) + b) - c) x d) None of these
- 37) **50 - 40 = ?**
a) 10 tens b) 90 ones c) 10 ones d) 20 ones
- 38) **Half of 20 = ?**
a) 40 b) 20 c) 5 d) 10
- 39) **Find sum of all odd numbers given here 1, 0, 5, 6, 3, 8**
a) 14 b) 9 c) 8 d) 23
- 40) **Which of the following is the correct expression?**
a) $6 + 5 = 11$ b) $7 + 4 = 13$ c) $8 + 3 = 12$ d) All of these

Section - C

(3 marks each)

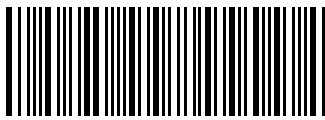
- 41) Kabir has 12 books. Veer has 6 more books than Kabir. How many books do they have altogether?
 a) 18 b) 45 c) 30 d) 35
- 42) The difference between the greatest and the smallest numbers among 15, 12, 11, 8, 4, 3
 a) 12 b) 11 c) 9 d) 8
- 43) Tejas makes 4 drawings in a day. How many drawing will he make in a week if Saturday and Sunday is a holiday?
 a) 28 b) 20 c) 24 d) 25
- 44) $8 + 3$ $7 + 4$ Compare and put appropriate sign (<, >, =)
 a) > b) < c) = d) None of these
- 45) $3 +$ $= 27 - 14$
 a) 10 b) 7 c) 12 d) 9
- 46) What is the sum of consecutive two even numbers immediately after 54?
 a) 110 b) 108 c) 114 d) 112
- 47) In a garage, there are 25 cars. If 9 cars have been repaired. How many cars are left to be repaired?
 a) 22 b) 17 c) 19 d) 16
- 48) **START** **END**

$26 + 4$		$- 5$		$+ 6$	
----------	--	-------	--	-------	--

 Find the END number.
 a) 31 b) 29 c) 41 d) 23
- 49) There are 25 students in class A and 19 students in class B. How many students are present in all?
 a) 14 b) 34 c) 44 d) 24
- 50) Tara had 45 balloons. She gave 20 balloons to her friend. How many balloons are left with Tara now?
 a) 65 b) 15 c) 20 d) 25



Do NOT write in this box
Seat Number



Paper

- A
- B
- C
- D
- E
- F
- G
- H
- I

Student Name :

School Name :

Seat No..... Grade Section Paper

STOP HERE

Student's Signature

Invigilator's Sign

INSTRUCTIONS FOR FILLING THE SHEET

1. This OMR Answersheet is pre-printed with student details. Verify the details before you start.
2. Use pencil or blue / black ball point pen to fill the circles.
3. Circles should be darkened completely and properly.
4. Do not scribble anywhere on the answersheet or its back side.
5. This sheet should not be folded or crushed.
6. Do not use marker or white fluid to hide the mark.

WRONG METHODS



CORRECT METHOD



- 1 A B C D
- 2 A B C D
- 3 A B C D
- 4 A B C D
- 5 A B C D

- 6 A B C D
- 7 A B C D
- 8 A B C D
- 9 A B C D
- 10 A B C D

- 11 A B C D
- 12 A B C D
- 13 A B C D
- 14 A B C D
- 15 A B C D

- 16 A B C D
- 17 A B C D
- 18 A B C D
- 19 A B C D
- 20 A B C D

- 21 A B C D
- 22 A B C D
- 23 A B C D
- 24 A B C D
- 25 A B C D

- 26 A B C D
- 27 A B C D
- 28 A B C D
- 29 A B C D
- 30 A B C D

- 31 A B C D
- 32 A B C D
- 33 A B C D
- 34 A B C D
- 35 A B C D

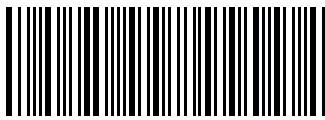
- 36 A B C D
- 37 A B C D
- 38 A B C D
- 39 A B C D
- 40 A B C D

- 41 A B C D
- 42 A B C D
- 43 A B C D
- 44 A B C D
- 45 A B C D

- 46 A B C D
- 47 A B C D
- 48 A B C D
- 49 A B C D
- 50 A B C D



Do NOT write in this box
Seat Number



Paper

- A
- B
- C
- D
- E
- F
- G
- H
- I

Model Paper Answer Key

Seat No..... Grade **2** Section Paper

STOP HERE

Student's Signature

Invigilator's Sign

INSTRUCTIONS FOR FILLING THE SHEET

1. This OMR Answersheet is pre-printed with student details. Verify the details before you start.
2. Use pencil or blue / black ball point pen to fill the circles.
3. Circles should be darkened completely and properly.
4. Do not scribble anywhere on the answersheet or its back side.
5. This sheet should not be folded or crushed.
6. Do not use marker or white fluid to hide the mark.

WRONG METHODS



CORRECT METHOD



- | | | | | |
|----|---|---|---|---|
| 1 | A | B | C | D |
| 2 | A | B | C | D |
| 3 | A | B | C | D |
| 4 | A | B | C | D |
| 5 | A | B | C | D |
| 6 | A | B | C | D |
| 7 | A | B | C | D |
| 8 | A | B | C | D |
| 9 | A | B | C | D |
| 10 | A | B | C | D |

- | | | | | |
|----|---|---|---|---|
| 11 | A | B | C | D |
| 12 | A | B | C | D |
| 13 | A | B | C | D |
| 14 | A | B | C | D |
| 15 | A | B | C | D |
| 16 | A | B | C | D |
| 17 | A | B | C | D |
| 18 | A | B | C | D |
| 19 | A | B | C | D |
| 20 | A | B | C | D |

- | | | | | |
|----|---|---|---|---|
| 21 | A | B | C | D |
| 22 | A | B | C | D |
| 23 | A | B | C | D |
| 24 | A | B | C | D |
| 25 | A | B | C | D |
| 26 | A | B | C | D |
| 27 | A | B | C | D |
| 28 | A | B | C | D |
| 29 | A | B | C | D |
| 30 | A | B | C | D |

- | | | | | |
|----|---|---|---|---|
| 31 | A | B | C | D |
| 32 | A | B | C | D |
| 33 | A | B | C | D |
| 34 | A | B | C | D |
| 35 | A | B | C | D |
| 36 | A | B | C | D |
| 37 | A | B | C | D |
| 38 | A | B | C | D |
| 39 | A | B | C | D |
| 40 | A | B | C | D |

- | | | | | |
|----|---|---|---|---|
| 41 | A | B | C | D |
| 42 | A | B | C | D |
| 43 | A | B | C | D |
| 44 | A | B | C | D |
| 45 | A | B | C | D |
| 46 | A | B | C | D |
| 47 | A | B | C | D |
| 48 | A | B | C | D |
| 49 | A | B | C | D |
| 50 | A | B | C | D |